

PART OF THE E 1/2, OF SECTION 34, T.7N., R.1E., S.L.B. & M.
BROWN'S SUBDIVISION 1ST AMENDMENT

406

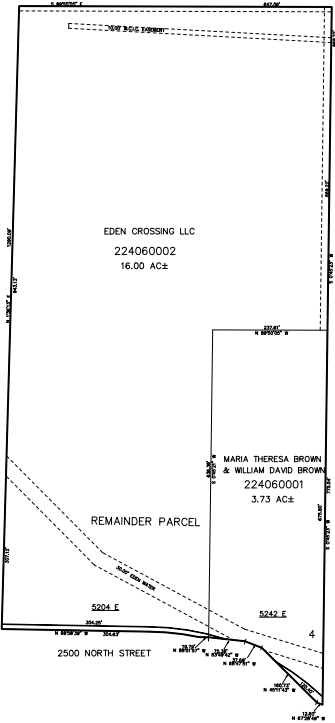
TAXING UNIT: 28

WEBER COUNTY
SCALE 1" = 200'

SEE PAGE 21

SEE PAGE 45

SEE PAGE 45



SEE PAGE 45

10' UTILITY & DRAINAGE EASEMENTS EACH
SIDE OF PROPERTY LINES AS INDICATED
BY DASHED LINES EXCEPT AS OTHERWISE
SHOWN.

FOR COMPLETE SURVEY DATA SEE
ORIGINAL DEDICATION PLAT IN
BOOK 92, PAGE 96 OF RECORDS.

FOR TAX PURPOSES ONLY

BK 2022